

ISSUE RECORD		
No.	Description	Date

NOT FOR CONSTRUCTION

PROJECT
**THE HEIGHTS (PHASE 2)
BLOCKS 5 & 6**

LOCATION
**Former Hillcrest Golf
Course**

DATE
12/15/2023
PROJECT MANAGER
PM
DRAWN BY
BL
CHECKED BY
BL

PROJECT NUMBER
23-266
DATE
12/15/2023

PREPARED FOR
**Twin Cities
Habitat
for Humanity**
1924 UNIVERSITY AVE W
SAINT PAUL, MN 55104
PH: 651-267-1700

SHEET TITLE
**BLOCK 3 LEVEL 1
FLOOR PLAN**

SHEET NUMBER

SEE CIVIL FOR SITE, LANDSCAPE, AND LOT LINE INFORMATION



ISSUE RECORD		
No.	Description	Date

NOT FOR CONSTRUCTION

PROJECT
THE HEIGHTS (PHASE 2)
BLOCKS 5 & 6

LOCATION
Former Hillcrest Golf Course

DATE
12/15/2023
PROJECT MANAGER
PM
DRAWN BY
BL
CHECKED BY
BL

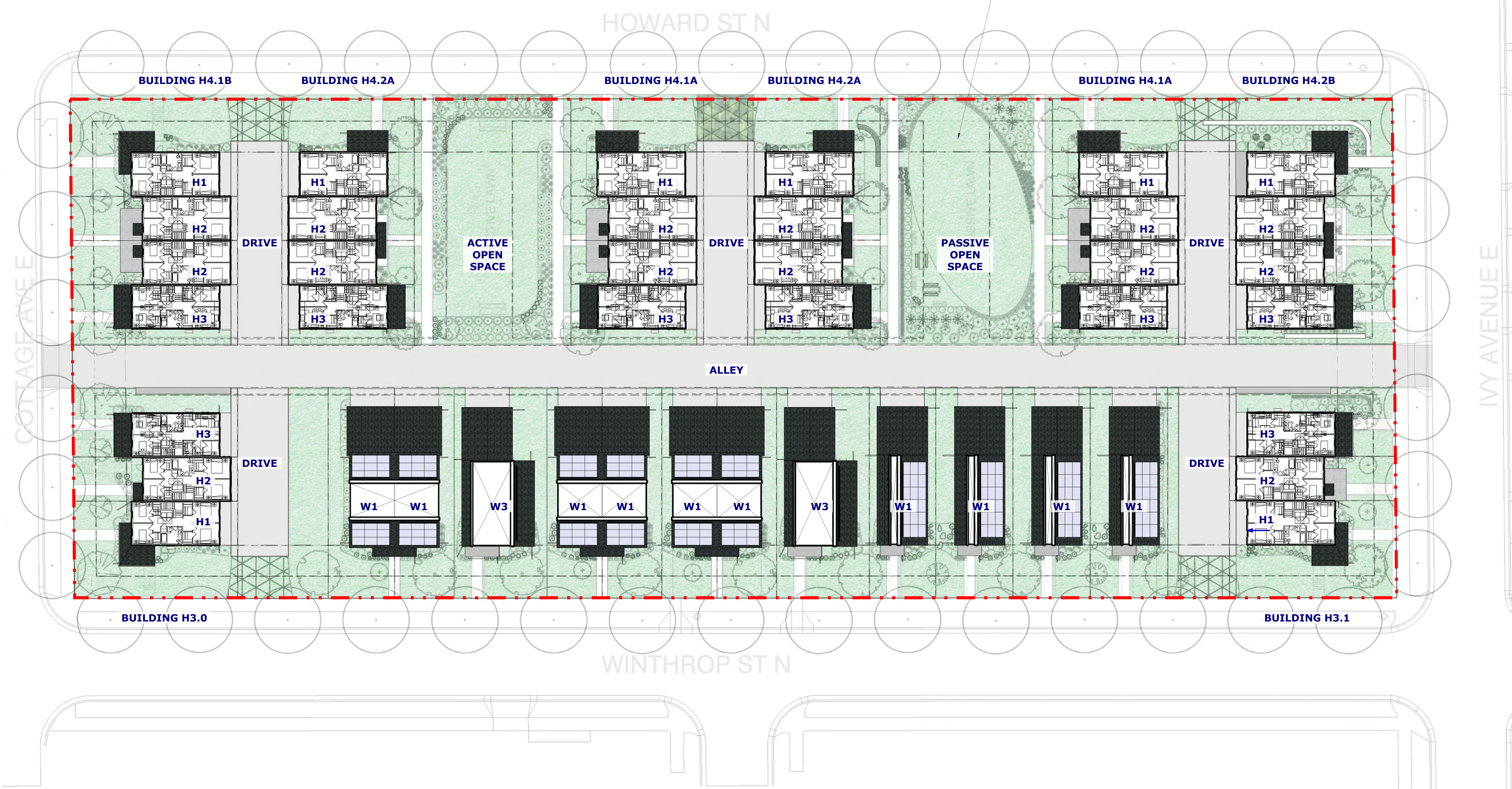
PROJECT NUMBER
23-256
DATE
12/15/2023

PREPARED FOR
 Twin Cities
Habitat for Humanity
1504 UNIVERSITY AVE W
SAINT PAUL, MN 55104
PH 651-207-1700

SHEET TITLE
BLOCK 3 LEVEL 2 FLOOR PLAN

SHEET NUMBER

SEE CIVIL FOR SITE, LANDSCAPE, AND LOT LINE INFORMATION



ISSUE RECORD		
No.	Description	Date

NOT FOR CONSTRUCTION

PROJECT
THE HEIGHTS (PHASE 2)
BLOCKS 5 & 6

LOCATION
Former Hillcrest Golf Course

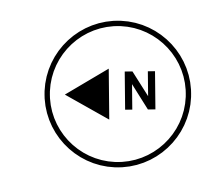
DATE
12/15/2023
PROJECT MANAGER
PM
DRAWN BY
BL
CHECKED BY
BL

PROJECT NUMBER
23-256
DATE
12/15/2023

PREPARED FOR
 Twin Cities
Habitat
for Humanity
1924 UNIVERSITY AVE W
SAINT PAUL, MN 55104
PH 651-207-1700

SHEET TITLE
**BLOCK 3 LEVEL 3
FLOOR PLAN**

SHEET NUMBER



SCALE: 1" = 20'



ISSUE RECORD

No.	Description	Date

NOT FOR CONSTRUCTION

PROJECT
THE HEIGHTS (PHASE 2)
BLOCKS 5 & 6

LOCATION
Former Hillcrest Golf Course

DATE
12/15/2023

PROJECT MANAGER
PM

DRAWN BY
BL

CHECKED BY
BL

PROJECT NUMBER
23-256

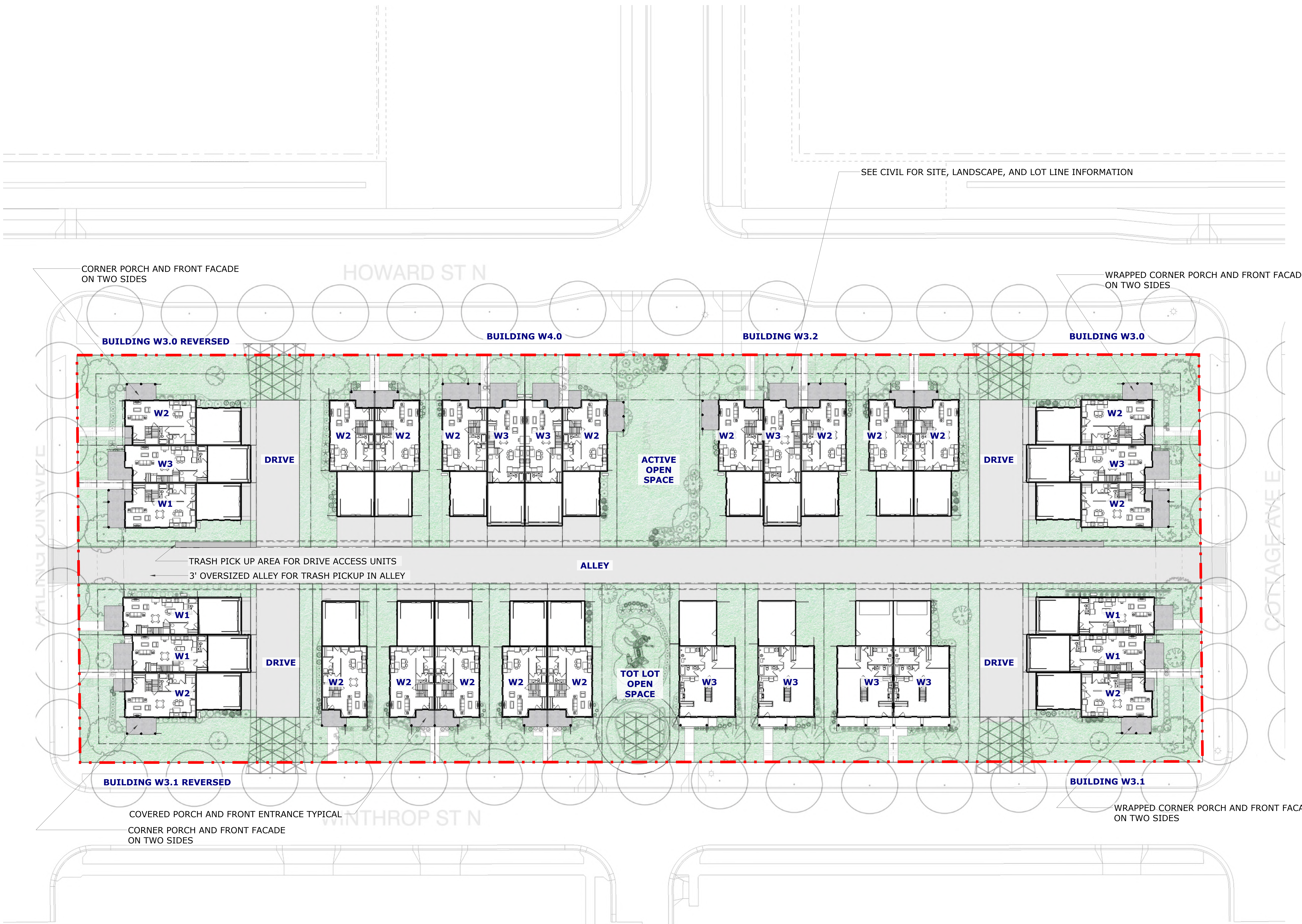
DATE
12/15/2023

PREPARED FOR
Twin Cities
Habitat
for Humanity®

1504 UNIVERSITY AVE W
SAINT PAUL, MN 55104
PH 651-207-1700

SHEET TITLE
BLOCK 3 ROOF PLAN

SHEET NUMBER



SEE CIVIL FOR SITE, LANDSCAPE, AND LOT LINE INFORMATION

CORNER PORCH AND FRONT FACADE ON TWO SIDES

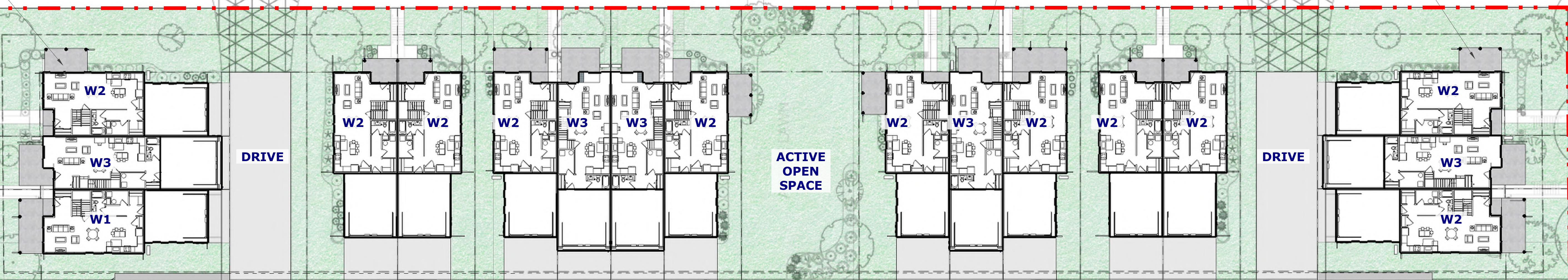
WRAPPED CORNER PORCH AND FRONT FACADE ON TWO SIDES

BUILDING W3.0 REVERSED

BUILDING W4.0

BUILDING W3.2

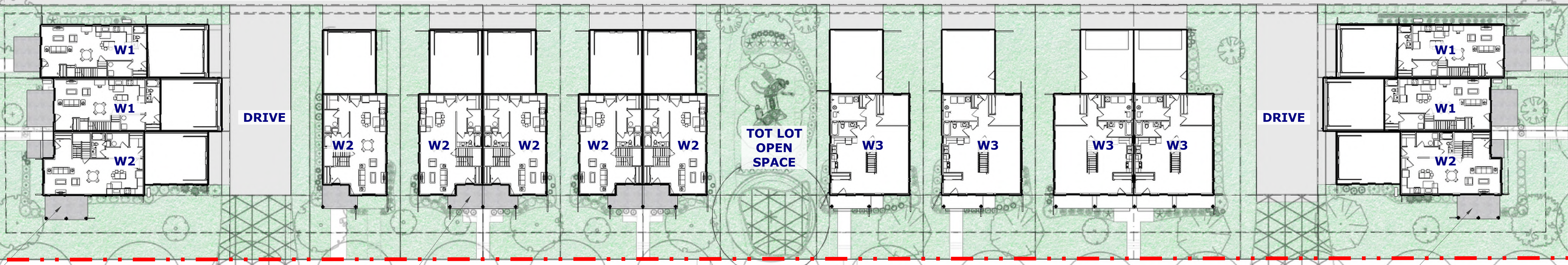
BUILDING W3.0



TRASH PICK UP AREA FOR DRIVE ACCESS UNITS
3' OVERSIZED ALLEY FOR TRASH PICKUP IN ALLEY

ALLEY

TOT LOT OPEN SPACE



BUILDING W3.1 REVERSED

BUILDING W3.1

COVERED PORCH AND FRONT ENTRANCE TYPICAL
CORNER PORCH AND FRONT FACADE ON TWO SIDES

WRAPPED CORNER PORCH AND FRONT FACADE ON TWO SIDES

ISSUE RECORD		
No.	Description	Date

NOT FOR CONSTRUCTION

PROJECT
**THE HEIGHTS (PHASE 2)
BLOCKS 5 & 6**

LOCATION
Former Hillcrest Golf Course

DATE
12/15/2023
PROJECT MANAGER
PM
DRAWN BY
BL
CHECKED BY
BL

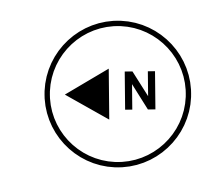
PROJECT NUMBER
23-256
DATE
12/15/2023

PREPARED FOR

1504 UNIVERSITY AVE W
SAINT PAUL, MN 55104
PH: 651-207-1700

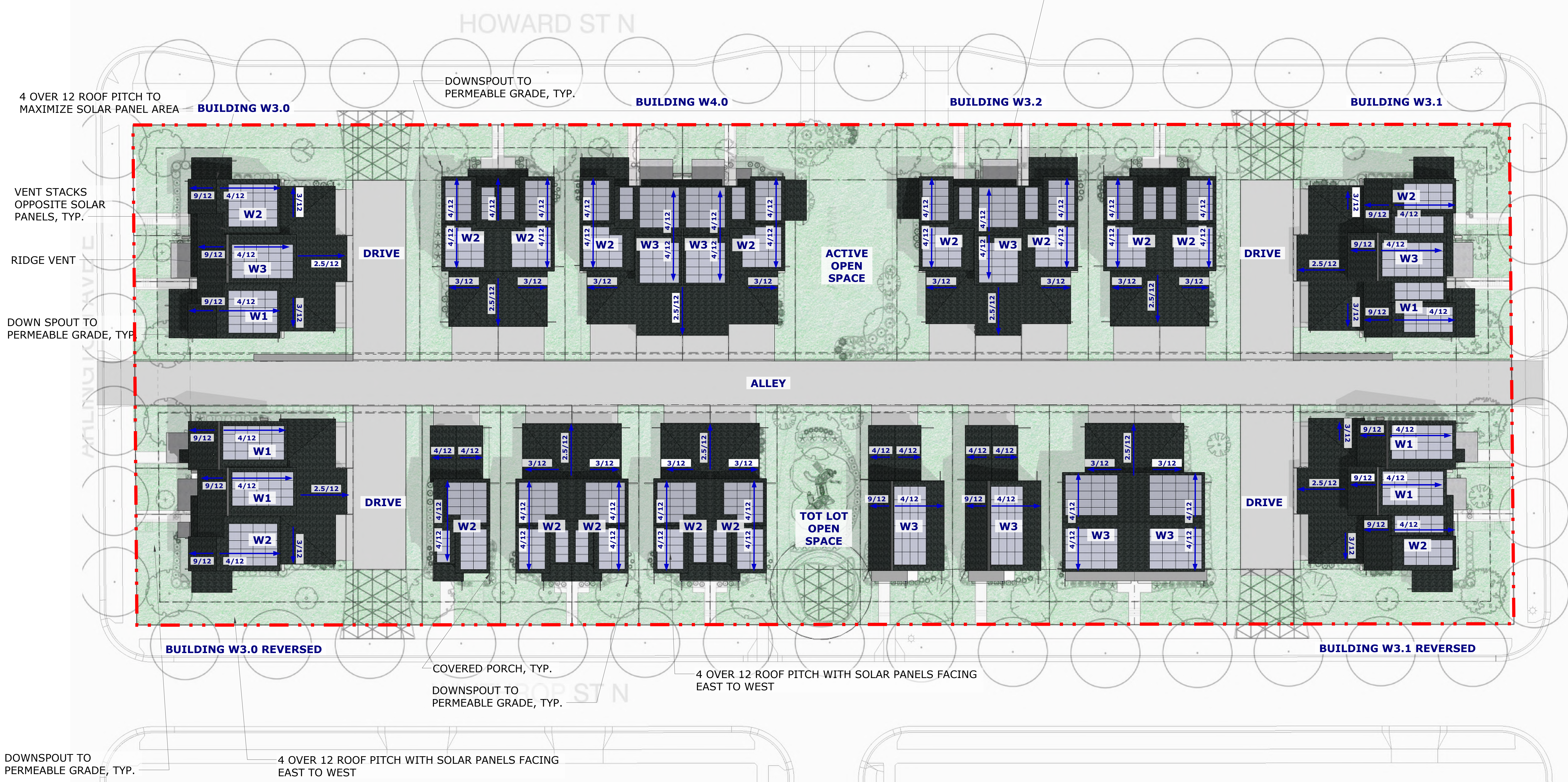
SHEET TITLE
**BLOCK 4 LEVEL 1
FLOOR PLAN**

SHEET NUMBER



SCALE: 1" = 20'

SEE CIVIL FOR SITE, LANDSCAPE, AND LOT LINE INFORMATION



ISSUE RECORD		
No.	Description	Date

NOT FOR CONSTRUCTION

PROJECT
**THE HEIGHTS (PHASE 2)
BLOCKS 5 & 6**

LOCATION
Former Hillcrest Golf Course

DATE
12/15/2023

PROJECT MANAGER
PM

DRAWN BY
BL

CHECKED BY
BL

PROJECT NUMBER
23-266

DATE
12/15/2023

PREPARED FOR
 **Habitat for Humanity**

1504 UNIVERSITY AVE W
SAINT PAUL, MN 55104
PH: 651-207-1700

SHEET TITLE
BLOCK 4 ROOF PLAN

SHEET NUMBER
26



ISSUE RECORD		
No.	Description	Date

NOT FOR CONSTRUCTION

PROJECT
**THE HEIGHTS (PHASE 2)
BLOCKS 5 & 6**

LOCATION
**Former Hillcrest Golf
Course**

DATE
12/15/2023
PROJECT MANAGER
PM
DRAWN BY
BL
CHECKED BY
BL

PROJECT NUMBER
23-256
DATE
12/15/2023

PREPARED FOR

Twin Cities
**Habitat
for Humanity**
1924 UNIVERSITY AVE W
SAINT PAUL, MN 55104
PH: 651-267-1700

SHEET TITLE
BLOCK 3 SE AERIAL

SHEET NUMBER





ISSUE RECORD		
No.	Description	Date


NOT FOR CONSTRUCTION

PROJECT
**THE HEIGHTS (PHASE 2)
BLOCKS 5 & 6**

LOCATION
**Former Hillcrest Golf
Course**

DATE
12/15/2023
PROJECT MANAGER
PM
DRAWN BY
BL
CHECKED BY
BL

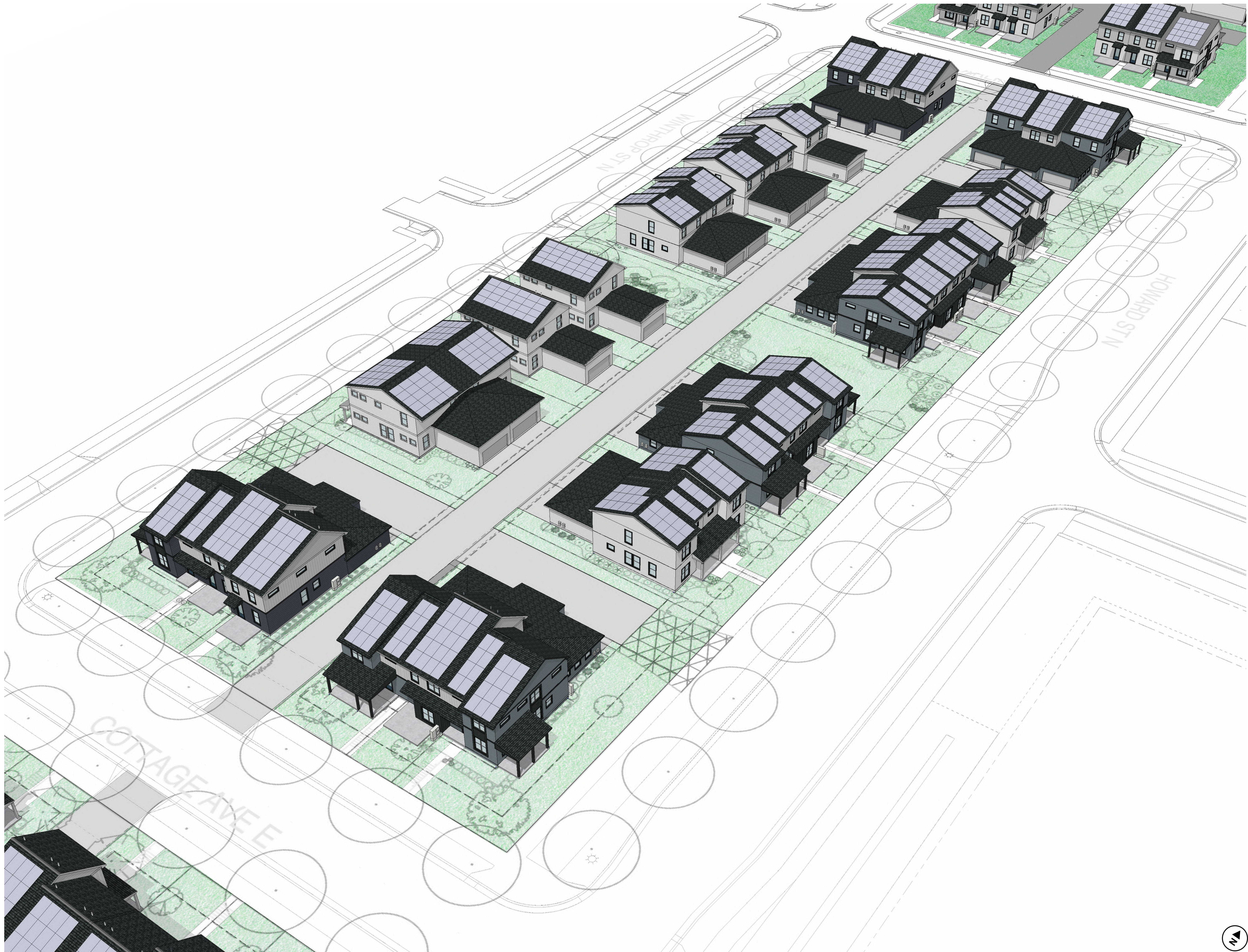
PROJECT NUMBER
23-256
DATE
12/15/2023

PREPARED FOR

1904 UNIVERSITY AVE W
SAINT PAUL, MN 55104
PH: 651-207-1700

SHEET TITLE
BLOCK 3 NW AERIAL

SHEET NUMBER





ISSUE RECORD

No.	Description	Date

NOT FOR CONSTRUCTION

PROJECT
**THE HEIGHTS (PHASE 2)
BLOCKS 5 & 6**

LOCATION
**Former Hillcrest Golf
Course**

DATE
12/15/2023
PROJECT MANAGER
PM
DRAWN BY
BL
CHECKED BY
BL

PROJECT NUMBER
23-266
DATE
12/15/2023

PREPARED FOR

Twin Cities
**Habitat
for Humanity**
1924 UNIVERSITY AVE W
SAINT PAUL, MN 55104
PH: 651-207-1700

SHEET TITLE
BLOCK 4 SE AERIAL

SHEET NUMBER





ISSUE RECORD

No.	Description	Date


NOT FOR CONSTRUCTION

PROJECT
**THE HEIGHTS (PHASE 2)
BLOCKS 5 & 6**

LOCATION
**Former Hillcrest Golf
Course**

DATE
12/15/2023
PROJECT MANAGER
PM
DRAWN BY
BL
CHECKED BY
BL

PROJECT NUMBER
23-266
DATE
12/15/2023

PREPARED FOR

1904 UNIVERSITY AVE W
SAINT PAUL, MN 55104
PH: 651-267-1700

SHEET TITLE
BLOCK 4 NW AERIAL

SHEET NUMBER





ISSUE RECORD

No.	Description	Date

NOT FOR CONSTRUCTION

PROJECT
**THE HEIGHTS (PHASE 2)
BLOCKS 5 & 6**

LOCATION
**Former Hillcrest Golf
Course**

DATE
12/15/2023
PROJECT MANAGER
PM
DRAWN BY
BL
CHECKED BY
BL

PROJECT NUMBER
23-266
DATE
12/15/2023

PREPARED FOR

1564 UNIVERSITY AVE W
SAINT PAUL, MN 55104
PH: 651-207-1700

SHEET TITLE
**BLOCK 3 SW
CORNER**

SHEET NUMBER



ISSUE RECORD		
No.	Description	Date

NOT FOR CONSTRUCTION

PROJECT
**THE HEIGHTS (PHASE 2)
BLOCKS 5 & 6**

LOCATION
Former Hillcrest Golf Course

DATE
12/15/2023
PROJECT MANAGER
PM
DRAWN BY
BL
CHECKED BY
BL

PROJECT NUMBER
23-266
DATE
12/15/2023

PREPARED FOR

1924 UNIVERSITY AVE W
SAINT PAUL, MN 55104
PH 651-207-1700

SHEET TITLE
**BLOCK 3 SE
CORNER**

SHEET NUMBER



ISSUE RECORD		
No.	Description	Date

NOT FOR CONSTRUCTION

PROJECT
**THE HEIGHTS (PHASE 2)
BLOCKS 5 & 6**

LOCATION
**Former Hillcrest Golf
Course**

DATE
12/15/2023
PROJECT MANAGER
PM
DRAWN BY
BL
CHECKED BY
BL

PROJECT NUMBER
23-266
DATE
12/15/2023

PREPARED FOR

1964 UNIVERSITY AVE W
SAINT PAUL, MN 55104
PH: 651-207-1700

SHEET TITLE
**BLOCK 3 OPEN
SPACE**

SHEET NUMBER





ISSUE RECORD		
No.	Description	Date


NOT FOR CONSTRUCTION

PROJECT
**THE HEIGHTS (PHASE 2)
BLOCKS 5 & 6**

LOCATION
**Former Hillcrest Golf
Course**

DATE
12/15/2023
PROJECT MANAGER
PM
DRAWN BY
BL
CHECKED BY
BL

PROJECT NUMBER
23-266
DATE
12/15/2023

PREPARED FOR

**Twin Cities
Habitat
for Humanity**
1924 UNIVERSITY AVE W
SAINT PAUL, MN 55104
PH: 651-207-1700

SHEET TITLE
**BLOCK 3 NE
CORNER**

SHEET NUMBER





ISSUE RECORD

No.	Description	Date

NOT FOR CONSTRUCTION

PROJECT
**THE HEIGHTS (PHASE 2)
BLOCKS 5 & 6**

LOCATION
**Former Hillcrest Golf
Course**

DATE
12/15/2023
PROJECT MANAGER
PM
DRAWN BY
BL
CHECKED BY
BL

PROJECT NUMBER
23-266
DATE
12/15/2023

PREPARED FOR

**Twin Cities
Habitat
for Humanity**
1924 UNIVERSITY AVE W
SAINT PAUL, MN 55104
PH: 651-207-1700

SHEET TITLE
**BLOCK 3 NW
CORNER**

SHEET NUMBER



ISSUE RECORD

No.	Description	Date

NOT FOR CONSTRUCTION

PROJECT
**THE HEIGHTS (PHASE 2)
BLOCKS 5 & 6**

LOCATION
Former Hillcrest Golf Course

DATE
12/15/2023
PROJECT MANAGER
PM
DRAWN BY
BL
CHECKED BY
BL

PROJECT NUMBER
23-266
DATE
12/15/2023

PREPARED FOR

Twin Cities
Habitat
for Humanity®
1924 UNIVERSITY AVE W
SAINT PAUL, MN 55104
PH: 651-207-1700

SHEET TITLE
**BLOCK 4 SW
CORNER**

SHEET NUMBER



ISSUE RECORD		
No.	Description	Date


NOT FOR CONSTRUCTION

PROJECT
**THE HEIGHTS (PHASE 2)
BLOCKS 5 & 6**

LOCATION
**Former Hillcrest Golf
Course**

DATE
12/15/2023
PROJECT MANAGER
PM
DRAWN BY
BL
CHECKED BY
BL

PROJECT NUMBER
23-266
DATE
12/15/2023

PREPARED FOR

**Twin Cities
Habitat
for Humanity**
1924 UNIVERSITY AVE W
SAINT PAUL, MN 55104
PH 651-207-1700

SHEET TITLE
**BLOCK 4 SE
CORNER**

SHEET NUMBER



ISSUE RECORD		
No.	Description	Date

NOT FOR CONSTRUCTION

PROJECT
**THE HEIGHTS (PHASE 2)
BLOCKS 5 & 6**

LOCATION
**Former Hillcrest Golf
Course**

DATE
12/15/2023
PROJECT MANAGER
PM
DRAWN BY
BL
CHECKED BY
BL

PROJECT NUMBER
23-266
DATE
12/15/2023

PREPARED FOR

**Twin Cities
Habitat
for Humanity**
1924 UNIVERSITY AVE W
SAINT PAUL, MN 55104
PH 651-207-1700

SHEET TITLE
**BLOCK 4 OPEN
SPACE**

SHEET NUMBER



ISSUE RECORD		
No.	Description	Date

NOT FOR CONSTRUCTION

PROJECT
**THE HEIGHTS (PHASE 2)
BLOCKS 5 & 6**

LOCATION
**Former Hillcrest Golf
Course**

DATE
12/15/2023
PROJECT MANAGER
PM
DRAWN BY
BL
CHECKED BY
BL

PROJECT NUMBER
23-266
DATE
12/15/2023

PREPARED FOR

1924 UNIVERSITY AVE W
SAINT PAUL, MN 55104
PH 651-207-1700

SHEET TITLE
**BLOCK 4 NE
CORNER**



ISSUE RECORD		
No.	Description	Date


NOT FOR CONSTRUCTION

PROJECT
**THE HEIGHTS (PHASE 2)
BLOCKS 5 & 6**

LOCATION
Former Hillcrest Golf Course

DATE
12/15/2023
PROJECT MANAGER
PM
DRAWN BY
BL
CHECKED BY
BL

PROJECT NUMBER
23-266
DATE
12/15/2023

PREPARED FOR

1924 UNIVERSITY AVE W
SAINT PAUL, MN 55104
PH: 651-207-1700

SHEET TITLE
**BLOCK 4 NW
CORNER**



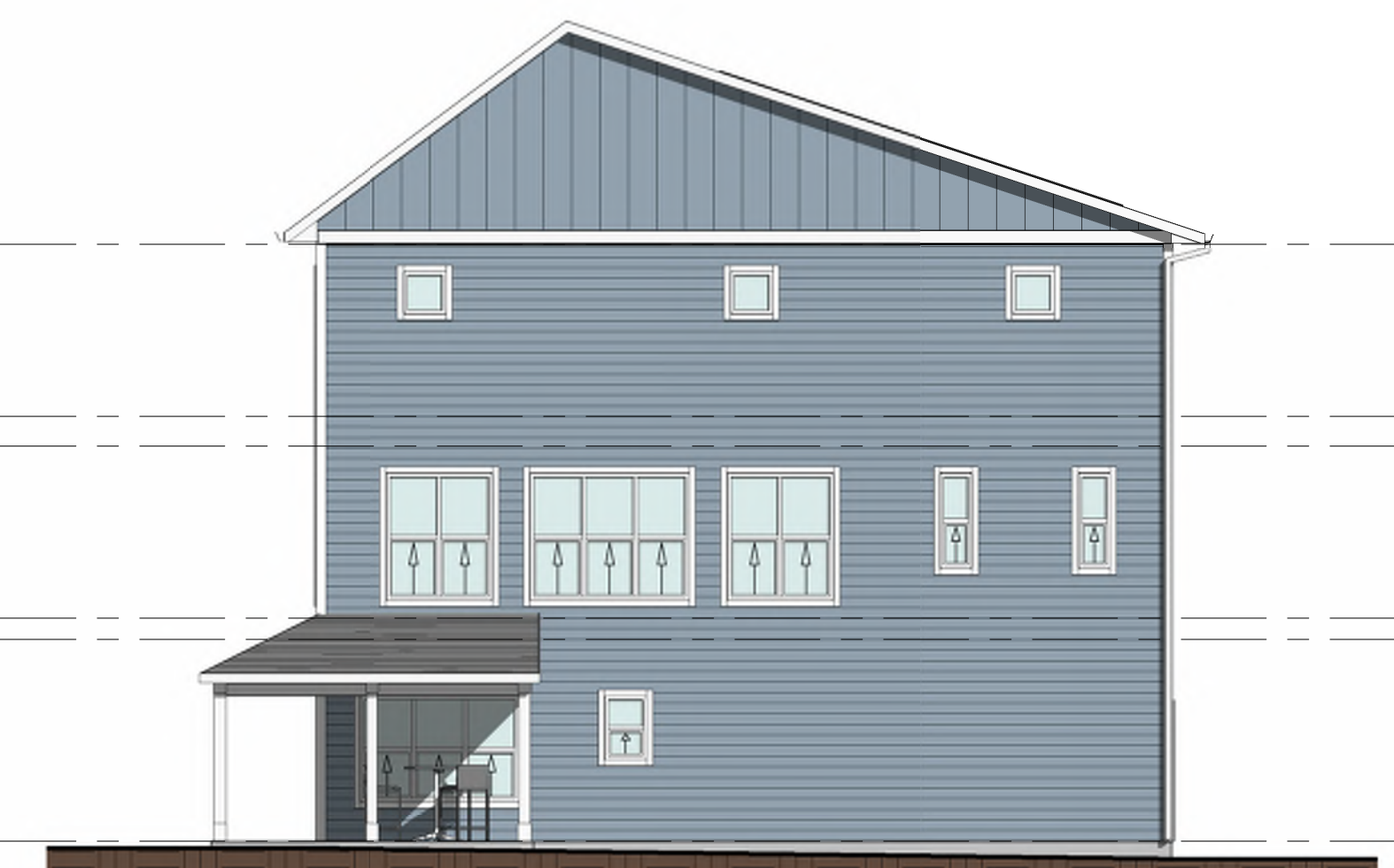
① FRONT ELEVATION - BUILDING H3.0
 1/8" = 1'-0"
 FACADE: 1,700 SQ FT
 WINDOWS: 277 SQ FT
 WINDOW PERCENTAGE: 16.3%



② LEFT ELEVATION - BUILDING H3.0
 1/8" = 1'-0"
 FACADE: 1,367 SQ FT
 WINDOWS: 147 SQ FT
 WINDOW PERCENTAGE: 10.8%



③ REAR ELEVATION - BUILDING H3.0
 1/8" = 1'-0"
 FACADE: 1,700 SQ FT
 WINDOWS: 178 SQ FT
 WINDOW PERCENTAGE: 10.5%



④ RIGHT ELEVATION - BUILDING H3.0
 1/8" = 1'-0"
 FACADE: 1,367 SQ FT
 WINDOWS: 210 SQ FT
 WINDOW PERCENTAGE: 15.4%



⑤ FRONT ELEVATION - BUILDING H3.1
 1/8" = 1'-0"
 FACADE: 1,700 SQ FT
 WINDOWS: 277 SQ FT
 WINDOW PERCENTAGE: 16.3%



⑥ RIGHT ELEVATION - BUILDING H3.1
 1/8" = 1'-0"
 FACADE: 1,367 SQ FT
 WINDOWS: 97 SQ FT
 WINDOW PERCENTAGE: 7.1%

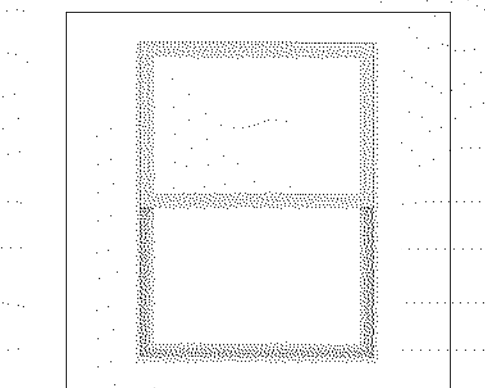


⑦ REAR ELEVATION - BUILDING H3.1
 1/8" = 1'-0"
 FACADE: 1,700 SQ FT
 WINDOWS: 144 SQ FT
 WINDOW PERCENTAGE: 8.5%



⑧ LEFT ELEVATION - BUILDING H3.1
 1/8" = 1'-0"
 FACADE: 1,367 SQ FT
 WINDOWS: 215 SQ FT
 WINDOW PERCENTAGE: 15.7%

MATERIALS



① ANDERSEN 100 SERIES WINDOWS



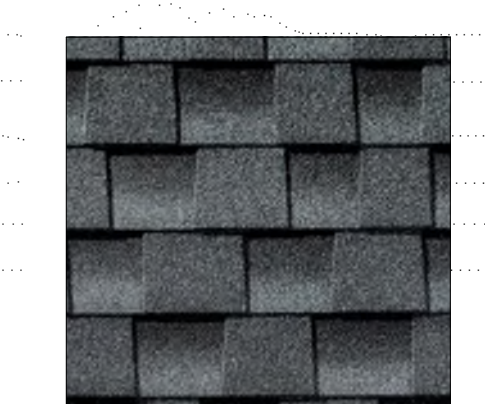
② LP SMARTSIDE LAP SIDING (COLORS VARY)



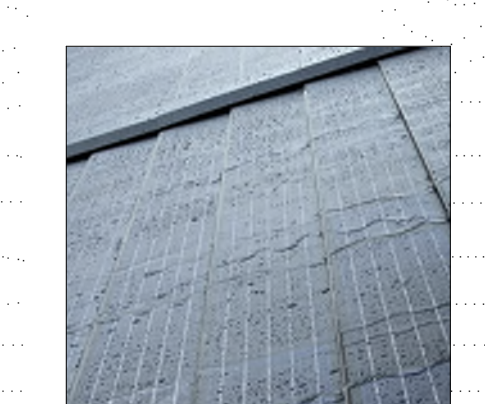
③ LP SMARTSIDE BOARD & BATTEN (COLORS VARY)



④ LP SMARTSIDE TRIM (COLORS VARY)



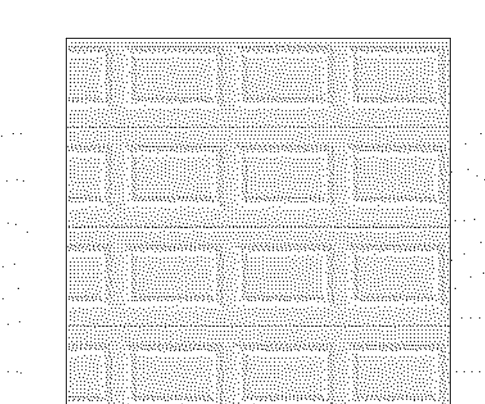
⑤ GAF ASPHALT SHINGLES



⑥ GAF TIMBERLINE SOLAR



⑦ ALUMINUM GUTTERS & DOWNSPOUTS



⑧ 16' X 7' ALUMINUM GARAGE DOORS

ISSUE RECORD

No.	Description	Date

NOT FOR CONSTRUCTION

PROJECT
HABITAT FOR HUMANITY - THE HEIGHTS

LOCATION

PROJECT NUMBER
 23-256

DATE
 03/18/24

PROJECT MANAGER

DRAWN BY
 Author

CHECKED BY
 Checker

PREPARED FOR

DORAN
 SPECIAL PROJECTS

7803 Glenry Road, Suite 200
 Bloomington, MN 55439
 952-288-2000
 952-288-2031 fax

SHEET TITLE

ELEVATIONS

SHEET NUMBER

1 OF 5



① FRONT ELEVATION - BUILDING H4.1A
 1/8" = 1'-0"
 FACADE: 1,700 SQ FT
 WINDOWS: 277 SQ FT
 WINDOW PERCENTAGE: 16.3%



② RIGHT ELEVATION - BUILDING H4.1A
 1/8" = 1'-0"
 FACADE: 1,367 SQ FT
 WINDOWS: 147 SQ FT
 WINDOW PERCENTAGE: 10.8%



③ REAR ELEVATION - BUILDING H4.1A
 1/8" = 1'-0"
 FACADE: 1,700 SQ FT
 WINDOWS: 178 SQ FT
 WINDOW PERCENTAGE: 10.5%



④ LEFT ELEVATION - BUILDING H4.1A
 1/8" = 1'-0"
 FACADE: 1,367 SQ FT
 WINDOWS: 210 SQ FT
 WINDOW PERCENTAGE: 15.4%



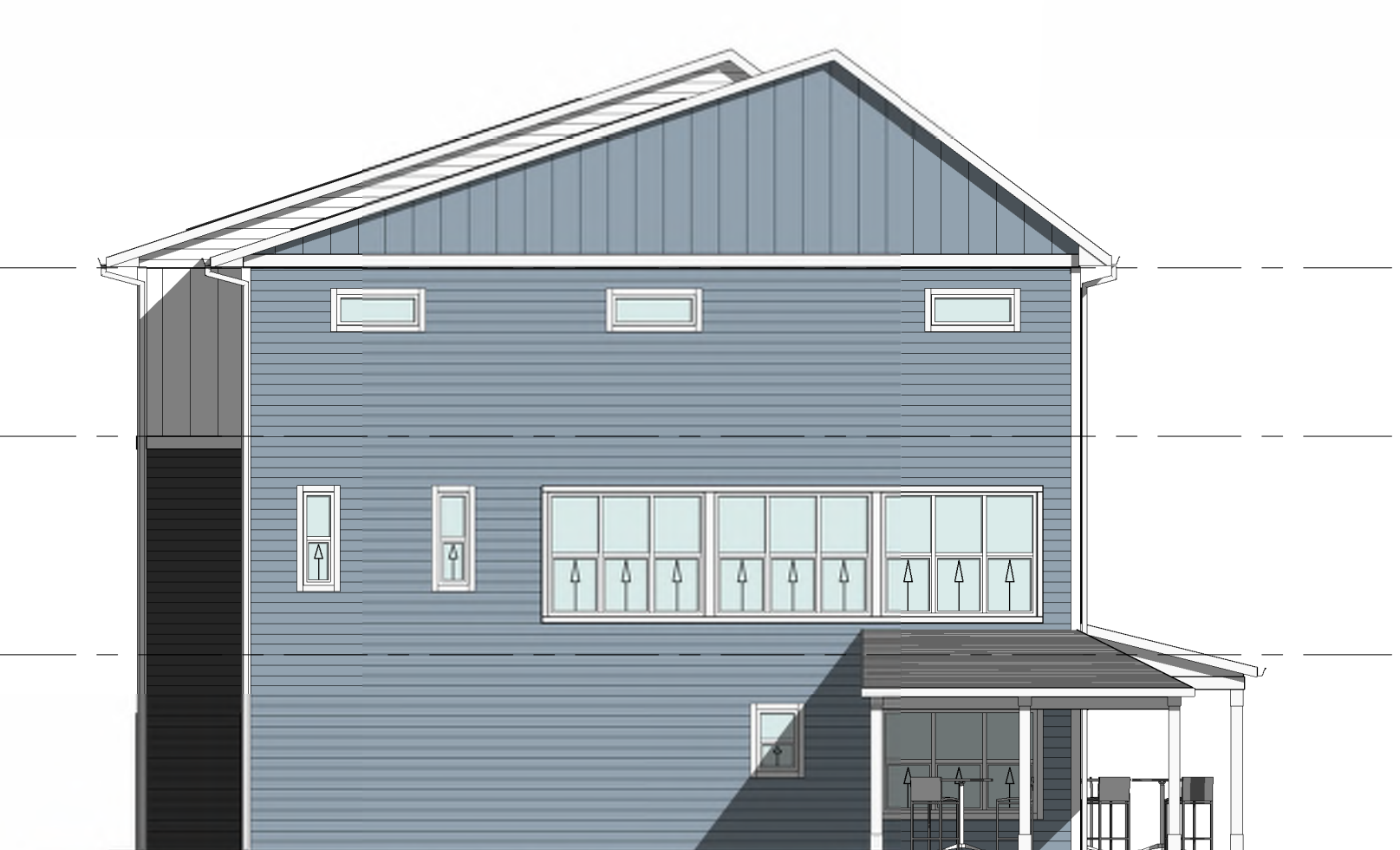
⑤ FRONT ELEVATION - BUILDING H4.1B
 1/8" = 1'-0"
 FACADE: 1,700 SQ FT
 WINDOWS: 277 SQ FT
 WINDOW PERCENTAGE: 16.3%



⑥ RIGHT ELEVATION - BUILDING H4.1B
 1/8" = 1'-0"
 FACADE: 1,367 SQ FT
 WINDOWS: 147 SQ FT
 WINDOW PERCENTAGE: 10.8%

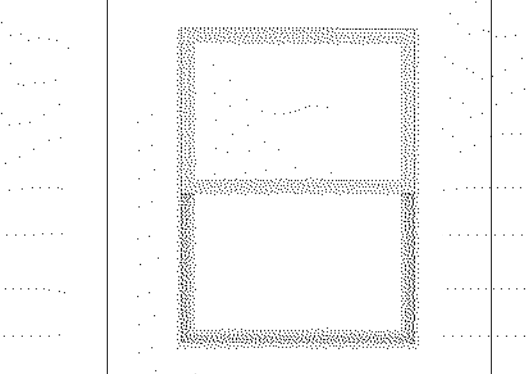


⑦ REAR ELEVATION - BUILDING H4.1B
 1/8" = 1'-0"
 FACADE: 1,700 SQ FT
 WINDOWS: 178 SQ FT
 WINDOW PERCENTAGE: 10.5%

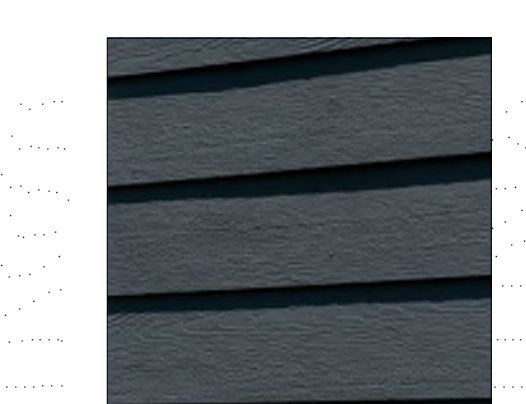


⑧ LEFT ELEVATION - BUILDING H4.1B
 1/8" = 1'-0"
 FACADE: 1,367 SQ FT
 WINDOWS: 210 SQ FT
 WINDOW PERCENTAGE: 15.4%

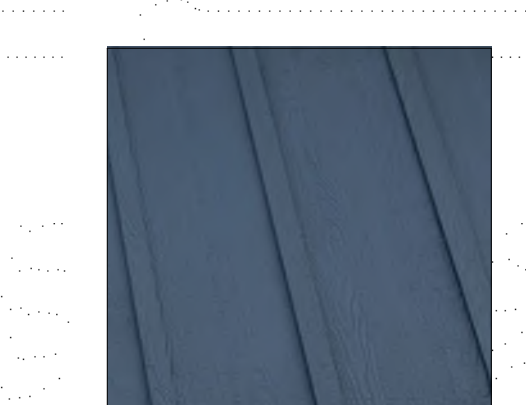
MATERIALS



① ANDERSEN 100 SERIES WINDOWS



② LP SMARTSIDE LAP SIDING (COLORS VARY)



③ LP SMARTSIDE BOARD & BATTEN (COLORS VARY)



④ LP SMARTSIDE TRIM (COLORS VARY)



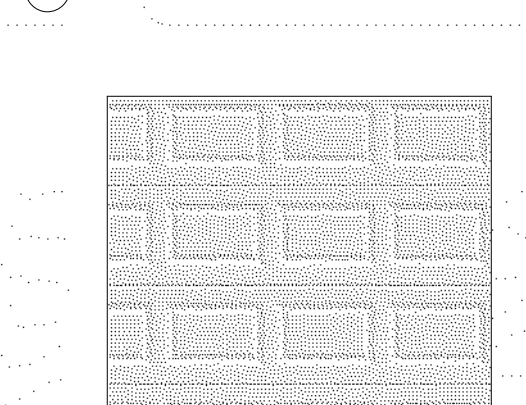
⑤ GAF ASPHALT SHINGLES



⑥ GAF TIMBERLINE SOLAR



⑦ ALUMINUM GUTTERS & DOWNSPOUTS



⑧ 16' X 7' ALUMINUM GARAGE DOORS

ISSUE RECORD

No.	Description	Date

NOT FOR CONSTRUCTION

PROJECT
HABITAT FOR HUMANITY - THE HEIGHTS

LOCATION

PROJECT NUMBER
 23-256

DATE
 03/18/24

PROJECT MANAGER

DRAWN BY
 Author

CHECKED BY
 Checker

PREPARED FOR
DORAN
 SPECIAL PROJECTS

7803 Glenary Road, Suite 200
 Bloomington, MN 55439
 952-288-2000
 952-288-2031 fax

SHEET TITLE

ELEVATIONS

SHEET NUMBER

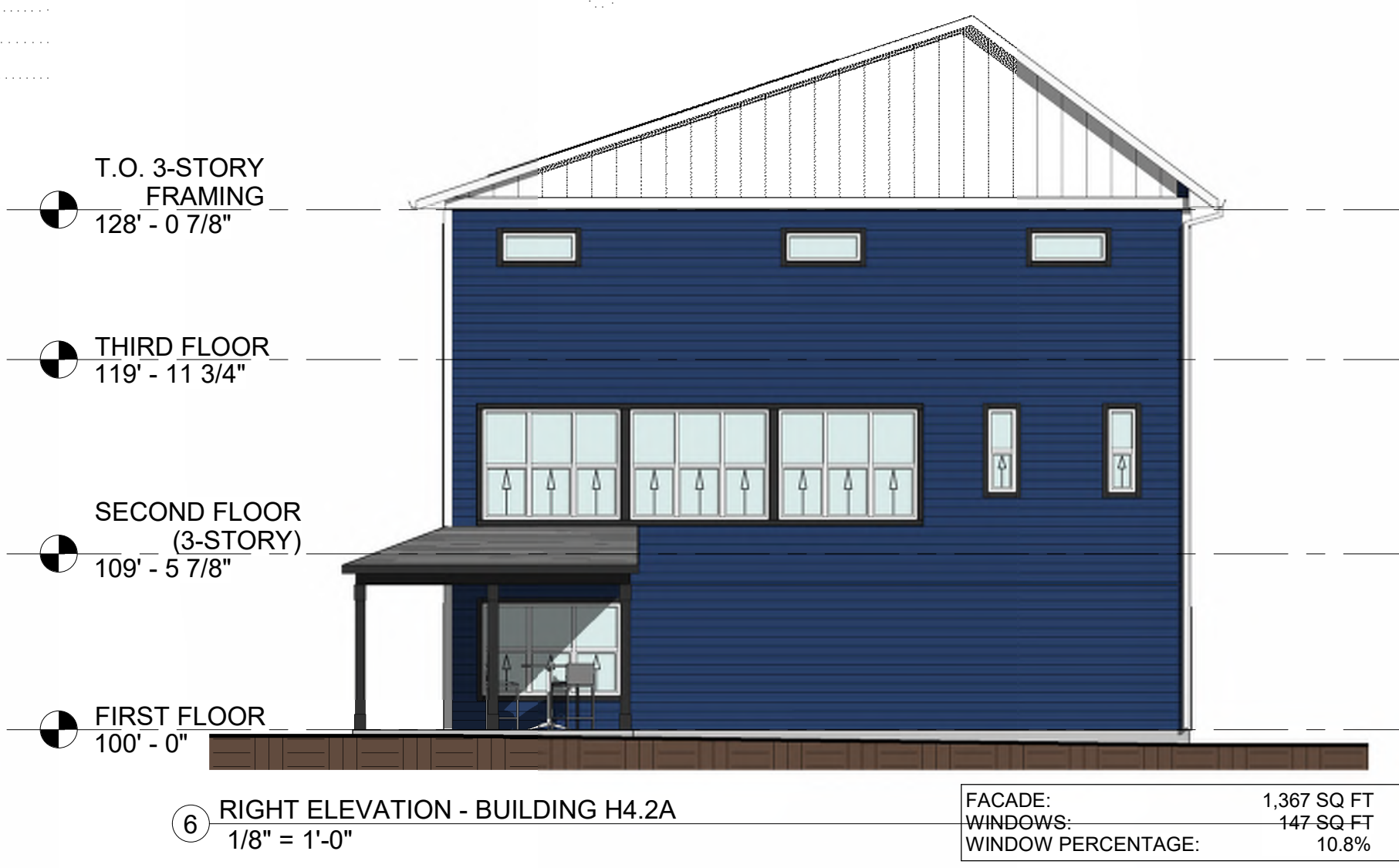
2 OF 5

PLOT DATE: 2/16/2024 2:58:12 PM



5 FRONT ELEVATION - BUILDING H4.2A
 1/8" = 1'-0"

FACADE: 1,700 SQ FT
 WINDOWS: 277 SQ FT
 WINDOW PERCENTAGE: 16.3%



6 RIGHT ELEVATION - BUILDING H4.2A
 1/8" = 1'-0"

FACADE: 1,367 SQ FT
 WINDOWS: 147 SQ FT
 WINDOW PERCENTAGE: 10.8%



7 REAR ELEVATION - BUILDING H4.2A
 1/8" = 1'-0"

FACADE: 1,700 SQ FT
 WINDOWS: 178 SQ FT
 WINDOW PERCENTAGE: 10.5%



8 LEFT ELEVATION - BUILDING H4.2A
 1/8" = 1'-0"

FACADE: 1,367 SQ FT
 WINDOWS: 210 SQ FT
 WINDOW PERCENTAGE: 15.4%



1 FRONT ELEVATION - BUILDING H4.2B
 1/8" = 1'-0"

FACADE: 1,700 SQ FT
 WINDOWS: 277 SQ FT
 WINDOW PERCENTAGE: 16.3%



4 RIGHT ELEVATION - BUILDING H4.2B
 1/8" = 1'-0"

FACADE: 1,367 SQ FT
 WINDOWS: 147 SQ FT
 WINDOW PERCENTAGE: 10.8%



2 REAR ELEVATION - BUILDING H4.2B
 1/8" = 1'-0"

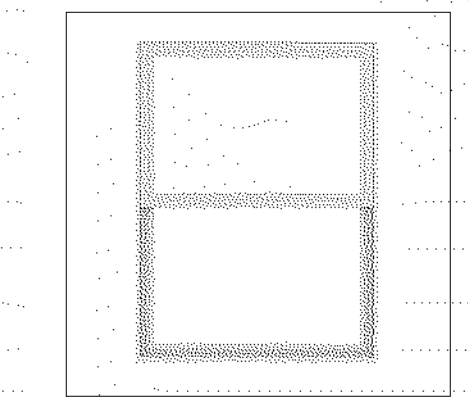
FACADE: 1,700 SQ FT
 WINDOWS: 178 SQ FT
 WINDOW PERCENTAGE: 10.5%



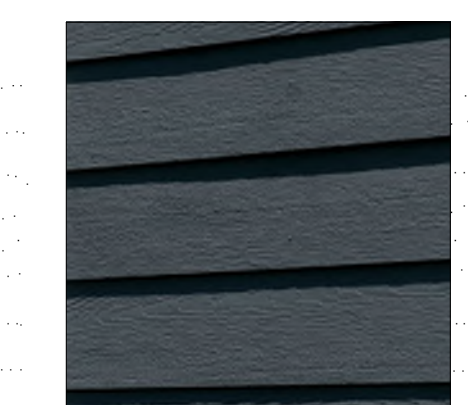
3 LEFT ELEVATION - BUILDING H4.2B
 1/8" = 1'-0"

FACADE: 1,367 SQ FT
 WINDOWS: 210 SQ FT
 WINDOW PERCENTAGE: 15.4%

MATERIALS



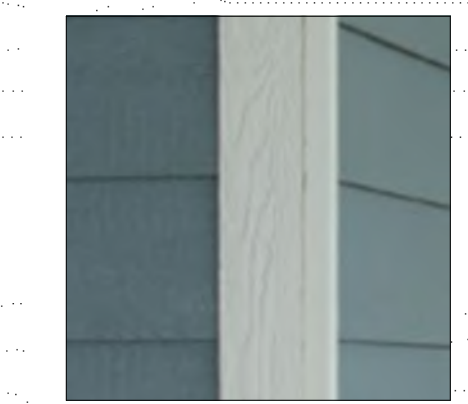
1 ANDERSEN 100 SERIES WINDOWS



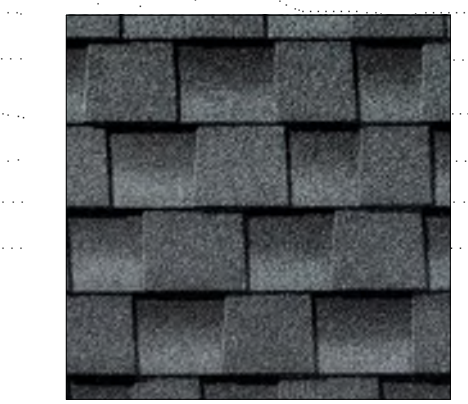
2 LP SMARTSIDE LAP SIDING (COLORS VARY)



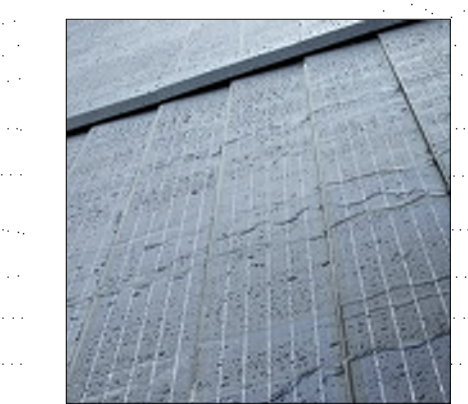
3 LP SMARTSIDE BOARD & BATTEN (COLORS VARY)



4 LP SMARTSIDE TRIM (COLORS VARY)



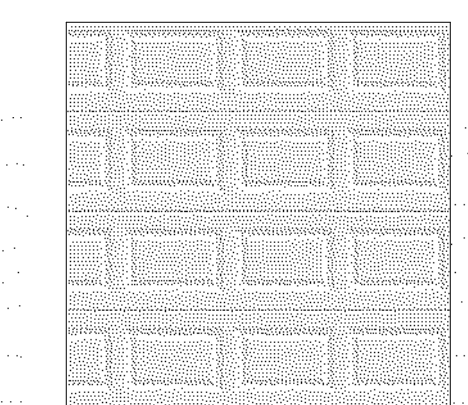
5 GAF ASPHALT SHINGLES



6 GAF TIMBERLINE SOLAR



7 ALUMINUM GUTTERS & DOWNSPOUTS



8 16' X 7' ALUMINUM GARAGE DOORS

ISSUE RECORD

No.	Description	Date

NOT FOR CONSTRUCTION

PROJECT
HABITAT FOR HUMANITY - THE HEIGHTS

LOCATION
 PROJECT NUMBER
 23-256
 DATE
 03/18/24
 PROJECT MANAGER
 DRAWN BY
 Author
 CHECKED BY
 Checker

PREPARED FOR
DORAN
 SPECIAL PROJECTS

7803 Glenry Road, Suite 200
 Bloomington, MN 55439
 952-288-2000
 952-288-2031 fax

SHEET TITLE
ELEVATIONS

SHEET NUMBER



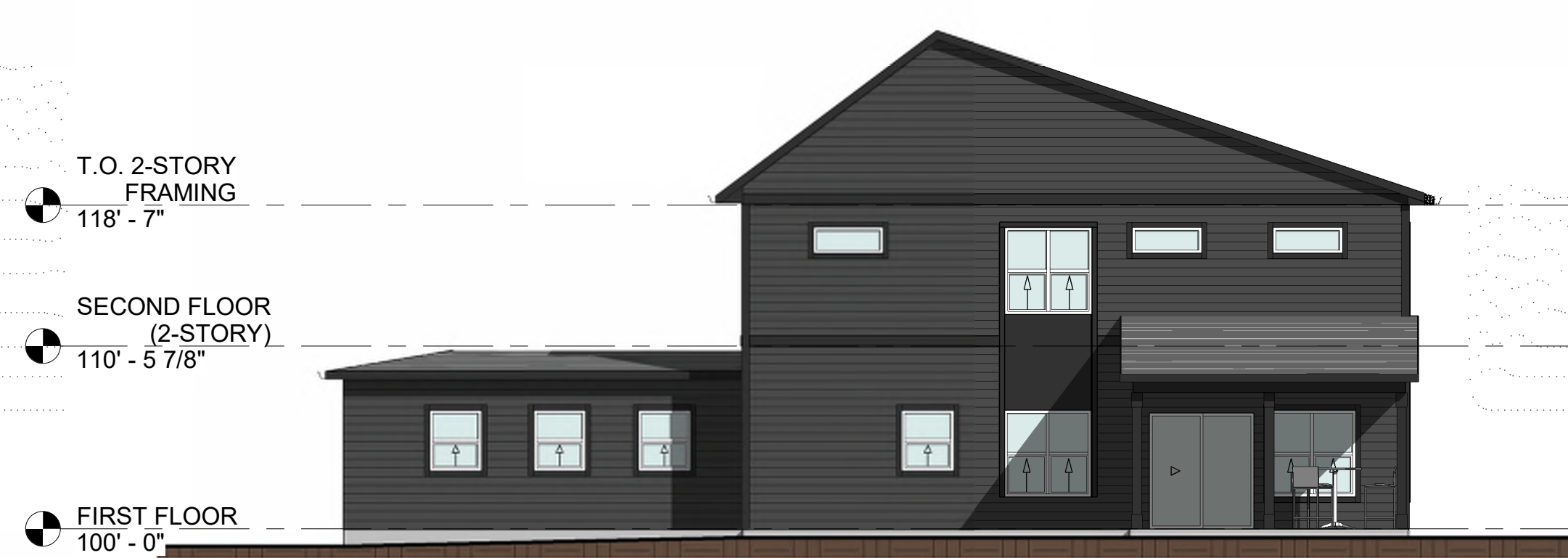
① FRONT ELEVATION - BUILDING W3.0
 1/8" = 1'-0"



② RIGHT ELEVATION - BUILDING W3.0
 1/8" = 1'-0"

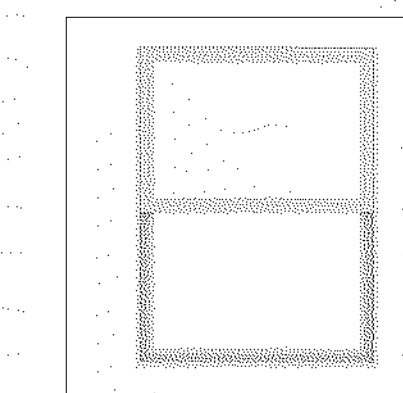


③ REAR ELEVATION - BUILDING W3.0
 1/8" = 1'-0"



④ LEFT ELEVATION - BUILDING W3.0
 1/8" = 1'-0"

MATERIALS



① ANDERSEN 100 SERIES WINDOWS



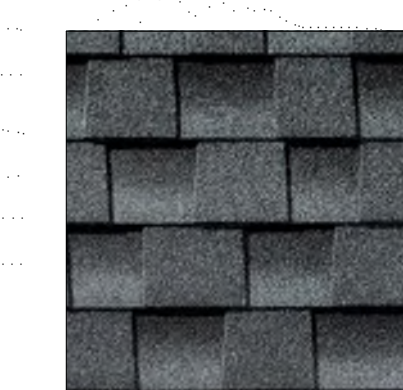
② LP SMARTSIDE LAP SIDING (COLORS VARY)



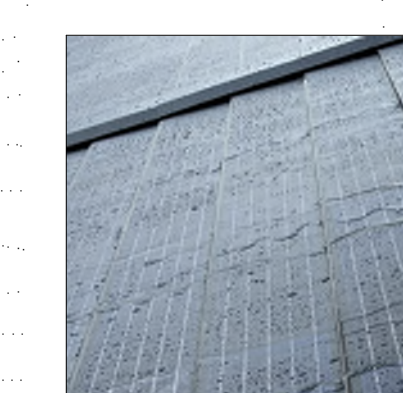
③ LP SMARTSIDE BOARD & BATTEN (COLORS VARY)



④ LP SMARTSIDE TRIM (COLORS VARY)



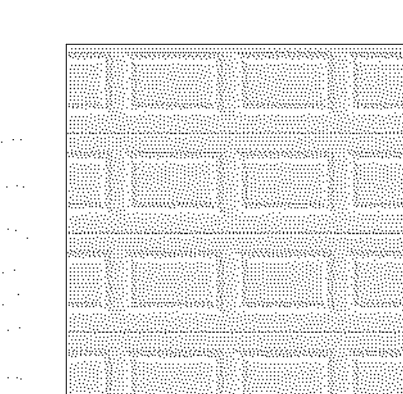
⑤ GAF ASPHALT SHINGLES



⑥ GAF TIMBERLINE SOLAR



⑦ ALUMINUM GUTTERS & DOWNSPOUTS



⑧ 16' X 7' ALUMINUM GARAGE DOORS

ISSUE RECORD

No.	Description	Date

NOT FOR CONSTRUCTION

PROJECT
HABITAT FOR HUMANITY - THE HEIGHTS

LOCATION

PROJECT NUMBER
 23-256

DATE
 03/18/24

PROJECT MANAGER

DRAWN BY
 Author

CHECKED BY
 Checker

PREPARED FOR

DORAN
 SPECIAL PROJECTS

7803 Glenry Road, Suite 200
 Bloomington, MN 55439
 952-288-2000
 952-288-2031 fax

SHEET TITLE
ELEVATIONS

SHEET NUMBER

4 OF 5

PLOT DATE: 2/16/2024 2:58:19 PM